

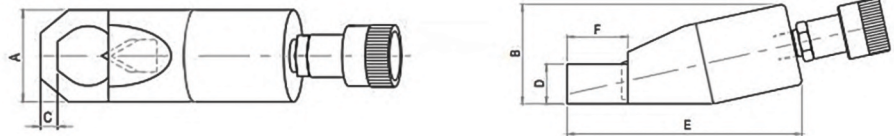
To remove nuts which cannot be removed using torque wrenches or any other tools, the hydraulic Nut splitting is safest, most efficient and cost effective way. The head is fitted with a heavy-duty chisel which split the nuts on a variety of applications.

ANGLE DESIGN



FEATURES :

- ▶ Light and compact design for ease of operation and handling.
- ▶ Dedicated cylinder with minimal stroke for faster operation.
- ▶ Rear end connection for ease of handling and safe-connection.
- ▶ 700 bar working pressure.
- ▶ Specially designed to suit standard flanges
- ▶ Single-acting, spring return cylinder
- ▶ Interchangeable heads provide maximum nut range flexibility
- ▶ Nickel-plated cylinder body for excellent corrosion protection.
- ▶ Unique angled head allows flush access
- ▶ Heavy-duty chisels can be reground
- ▶ Applications include servicing trucks, piping industry, tank cleaning, petrochemical, steel construction and mining.

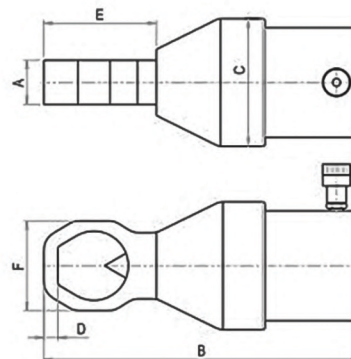


TECHNICAL SPECIFICATION

MODEL NO	STUD SIZE		NUT SIZE A/F		A	B	C	D	E	F	WEIGHT
	MM	INCH	MM	INCH	(mm)	(mm)	(mm)	(mm)	(mm)	(mm)	(Approx) (Kg)
PNS-19A	M6-M12	1/4"-3/8"	10-19	1/2"-11/16"	40	52	8	20	130	30	1.0
PNS-24A	M12-M16	3/8"-9/16"	19-24	11/16"-15/16"	54	67	12	24	163	41	2.0
PNS-32A	M16-M22	9/16"-3/4"	24-32	15/16"-1.1/4"	64	79	13	30	187	52	3.0
PNS-41A	M22-M27	3/4"-1"	32-41	1.1/4"-1.5/8"	78	94	20	37	219	69	4.5
PNS-50A	M27-M33	1"-1.1/4"	41-50	1.5/8"-2"	95	113	21	45	265	78	9.6
PNS-60A	M33-M39	1.1/4"-1.1/2"	50-60	2"-2.3/8"	106	128	25	54	297	91	13.0
PNS-75A	M39-M48	1.1/2"-1.7/8"	60-75	2.3/8"-2.15/16"	156	185	27	75	357	110	34.0

PNS SERIES

STRAIGHT DESIGN



TECHNICAL SPECIFICATION

MODEL NO	STUD SIZE		NUT SIZE A/F		A	B	C	D	E	F	WEIGHT
	MM	INCH	MM	INCH	(mm)	(mm)	(mm)	(mm)	(mm)	(mm)	(Approx) (Kg)
PNS-36S	M10-M24	3/8"-7/8"	17-36	11/16"-1.7/16"	38	271	105	10	92	66	11
PNS-50S	M24-M33	7/8"-1.1/4"	36-50	1.7/16"-2"	38	287	108	13	109	86	12
PNS-60S	M30-M39	1.1/8"-1.1/2"	46-60	1.13/16"-2.3/8"	57	386	164	15	125	102	35
PNS-70S	M36-M45	1.3/8"-1.3/4"	55-70	2.3/16"-2.3/4"	57	407	164	18	145	115	36
PNS-90S	M45-M60	1.3/4"-2.1/4"	70-90	2.3/4"-3.1/2"	78	465	214	22	154	146	78
PNS-100S	M52-M68	2"-2.1/2"	80-100	3.1/8"-3.7/8"	80	487	214	22	162	160	79
PNS-105S	M64-M72	2.1/2"-2.3/4"	95-105	3.7/8"-4.1/4"	95	579	250	29	185	192	123
PNS-115S	M72-M80	2.3/4"-3.1/4"	105-115	4.1/4"-5"	105	590	250	29	185	229	135
PNS-130S	M80-M90	3.1/4"-3.1/2"	115-130	5"-5.3/8"	105	601	250	33	198	238	138